



Quick Start Guide

1 Connect The Road Runner™

A When unpacking the counter please make sure the following items are included:

- Traffic Counter
- Serial Interface Cable (sold separately)
- End Caps (attached to road tube nozzles)
- Serial Port Cover (screw insert on unit faceplate)



B To connect the Road Runner™ to a PC, first download the *Traffic Viewer* software available online at www.roadwaydata.com.

C To install the *Traffic Viewer* software, click on the downloaded executable file to install on the PC. Follow the installation screens and click *OK* to complete installation of the software.

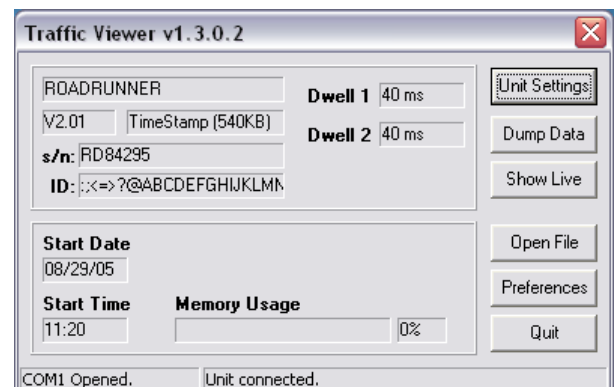
D Connect the serial cable to the PC and to the Road Runner™ and check to make sure the connector is inserted all the way. Start the software by clicking on the desktop icon.



E With the unit connected Click the “*Unit Settings*” button then click on “*Reset Unit*” to set the clock and clear the memory.

In the Unit Settings window enter up to a 30 character ID string into the unit for site ID or unique study ID.

NOTE: The unit is always on and in collection mode, be sure to clear the memory and repeat this step before each study



Proceed to Step 2.

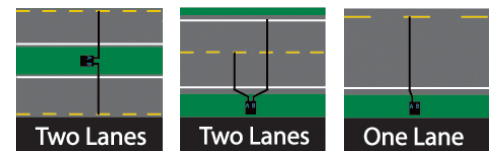
See next page >

- A** Before proceeding to site installation, the following items will be needed:
- Traffic Counter
 - DataViewer *
 - Road tube (1/4" , Mini, or CityTube™) =<30ft per channel
 - End plugs for road tube
 - Nails, clamps and/or tie downs for road tube
 - Lock and chain (for securing counter unit)
 - Safety equipment and tools needed for installation on roadway (refer to road tube installation guide at www.roadwaydata.com).

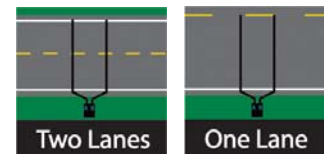
- B** Survey the site to verify free flowing traffic and no slow or stopping traffic will cause faulty data. Set out the road tube to match configurations as shown in the side diagrams depending on road layout and data needed.

NOTE: The Road Runner Timestamp™ version can also be used as a count only unit. Once data has been downloaded, the layout can be chosen for either class or count outlined in step three of this guide.

Count Only (volume time interval):



Classification (speed & axle):



- C** Check to make sure road tube is secure to the road, then attach to the Road Runner™ A (and/or B) channel of the counter. Plug the DataViewer* in to monitor the unit as traffic crosses the site.

NOTE: The DataViewer* is optional, it provides verification of tube and unit operation on site, contact Roadway Data for details. * = *Optional*



- D** Secure the Road Runner™ to a solid sign post or other similar roadside object to prevent theft and vandalism. It is best to place the unit so it is out of plain view or away from the road to deter tampering.

Proceed to Step 3.

See next page >

3 Collect Data from Road Runner™

- A** When removing the unit from the site, check to see tubes are still intact and that the connection to the unit is secure to verify no tampering has been done to interrupt data collection.
- B** Connect the serial cable to the PC and to the Road Runner™ and check to make sure the connector is inserted all the way. Start the Software by clicking on the desktop icon.



- C** Once the software has connected be sure to verify the clock and then click the “*Dump Data*” button to start the data download. The Header Information screen will appear. Type in the Location identifier and any comments needed to be stored in the header for later reporting and exporting.

Verify that hose setup is correct by checking the picture layout and change if necessary by using the provided check options on the left.

Click the “*Continue*” Button to start data dump.

A screenshot of a software window titled 'Header Information'. It contains several input fields: 'Location', 'Comments', and 'Posted Speed' (with a note '(optional -- displayed on speed reports/exports)'). There are dropdown menus for 'Measure' (set to 'English') and 'Classification Mode' (set to 'FHWA'). Input fields for 'Hose A Dwell' and 'Hose B Dwell' are both set to '55 ms'. A 'Hose Spacing' field is set to '48 inches'. A checkbox for 'Spacing Unknown or Axle Hits Only' is unchecked. Below these is a 'Hose Setup' section with checkboxes for 'Single Lane' (checked), 'Multi-Lane', 'Median', 'Single Hose' (checked), and 'Short/Long Hose'. To the right is a 'Lane Direction/Name' section with a 'Toggle A/B hose' button and a dropdown menu set to 'North Bound'. A diagram shows a road cross-section with a green lane, a grey median, and a green lane, with a vertical line labeled 'A' in the center. At the bottom are 'Cancel' and 'Continue >>' buttons.

- D** Once downloaded, the data can be saved, printed or exported accordingly. For support or help with your counter please contact us at support@roadwaydata.com

Roadway Data carries a complete product and accessories catalog. Check out our website for products and accessories at www.roadwaydata.com or request a catalog at sales@roadwaydata.com

ROADWAY DATA

P.O. Box 1455
76433 Alder Street
Oakridge, Oregon 97463

phone 541.782.2772
fax 541.782.4730
email sales@roadwaydata.com